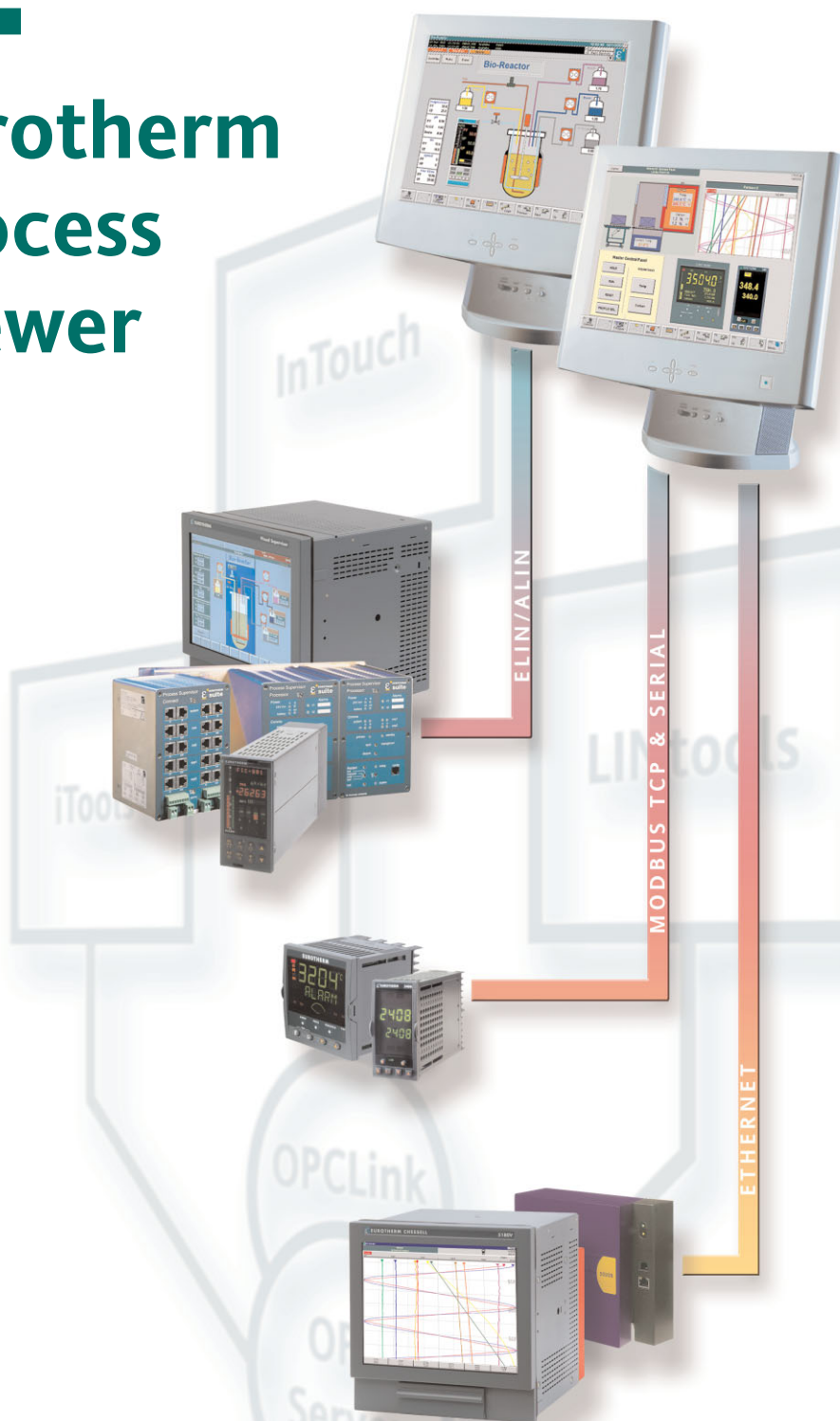


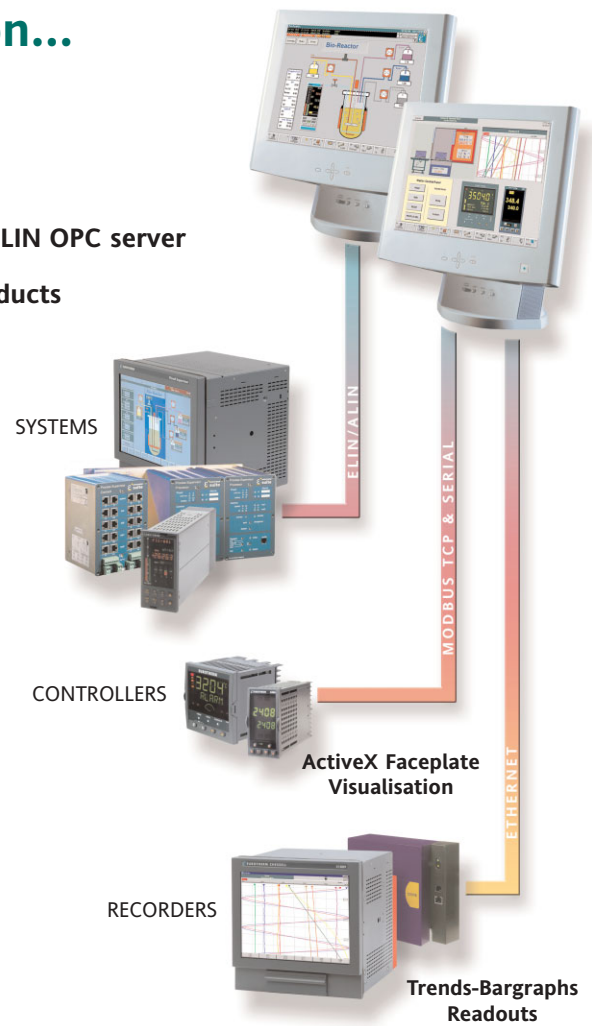
T555

Eurotherm Process Viewer



Unique levels of system integration...

- Low cost HMI based on Wonderware InTouch®
- Use of iTools ActiveX to visual Eurotherm Controllers
- Contains iTools and EuroMBus OPC® server, LINtools and LIN OPC server
- Serial and Ethernet comms support for all Eurotherm products
- Easy to configure



Extrusion

Automotive

Paper

Furnace

Combined Heat and Power

Rubber and Plastics

...for best-in-class control solutions

Pharmaceutical

Food and Drink

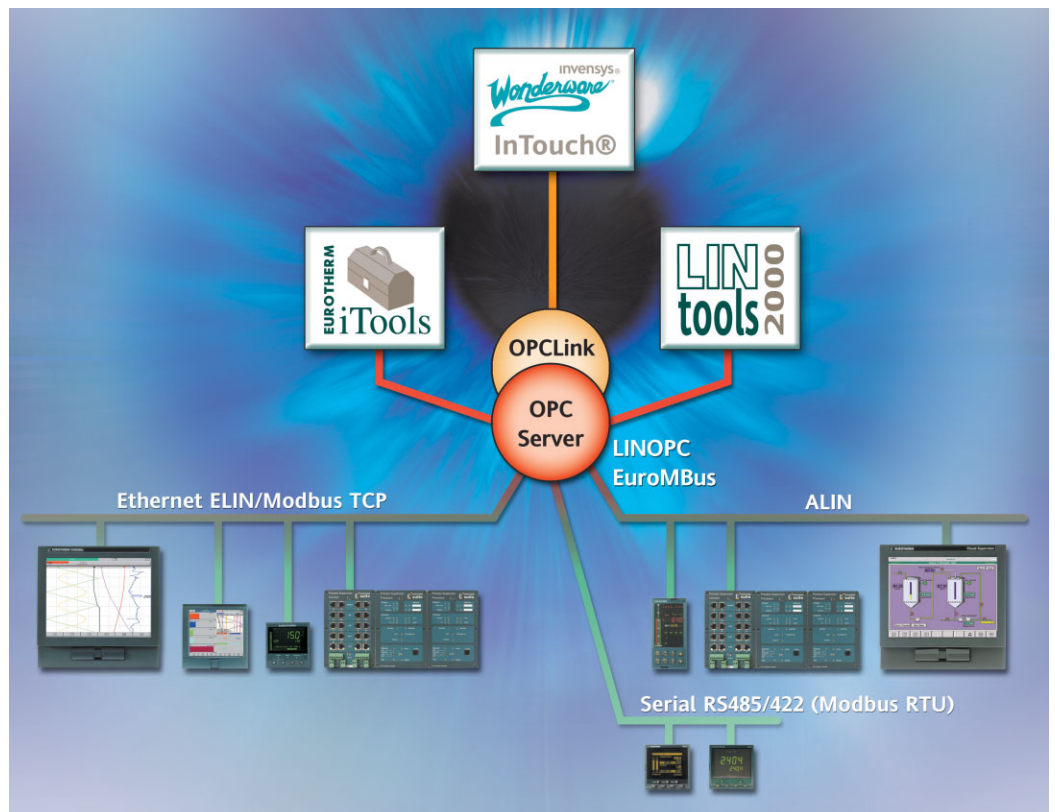
Environmental

Boilers

Textile

Cable

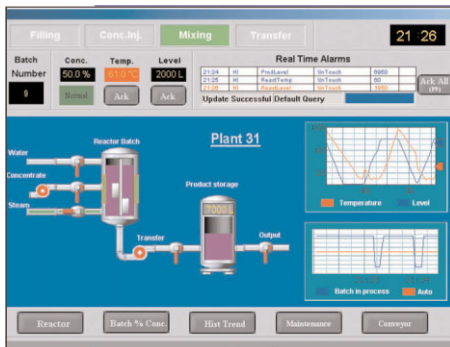
Minerals



Wonderware InTouch 9.0



OVERVIEW



Wonderware's InTouch 9.0 visualisation software is a powerful graphical human-machine interface (HMI) for industrial automation, process control and supervisory monitoring. The InTouch HMI enables users to visualise and control industrial processes while providing engineers with an easy-to-use development environment and extensive functionality to rapidly create, test and deploy powerful automation applications that connect and deliver realtime information. InTouch software is an open and extensible HMI that enables flexibility in custom application design with connectivity to the broadest set of automation devices in the industry.

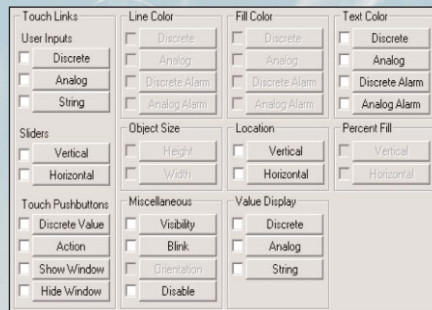
UNRIVALED CONNECTIVITY

InTouch software can connect to virtually any industrial automation control device because of the hundreds of available I/O and OPC servers that are designed to connect to Wonderware products. The list of available servers is longer than that of any other HMI product on the market. This is made possible by Wonderware's device integration team as well as hundreds of third-party product developers that offer connectivity to Rockwell, Siemens, Schneider and other products. Wonderware servers provide access to InTouch application data through Microsoft DDE communications, Wonderware's SuiteLink™ protocol or OPC technology. Third-party developers can use the ArchestrA DAS (data access server) Toolkit to create servers that incorporate one or all of the communication methods listed above. The InTouch HMI, as well as Wonderware's other FactorySuite A2™ products, are capable of serving as an OPC clients or OPC server.

When customers purchase the industry's leading HMI, they also receive worldwide application support. Wonderware has installed more than 200,000 InTouch HMIs worldwide and has a track record for protecting customers' application engineering investments by automatically migrating their applications to new versions of InTouch software.

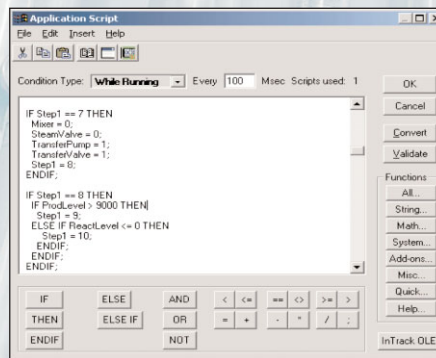
EASE OF USE

Graphical User Interface (GUI)



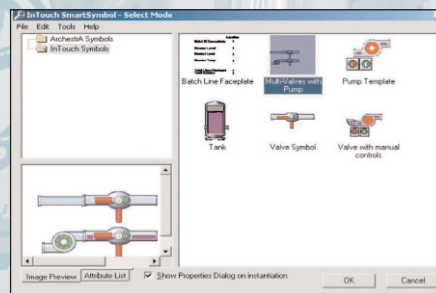
The InTouch HMI also empowers users to quickly and easily develop custom graphical views of their processes. A user can develop graphics with a variety of tools in Wonderware's WindowMaker™ graphical editing program, which includes standard graphical components, bitmap images, ActiveX® controls and Symbol Factory – an advanced graphics library that contains thousands of preconfigured industrial images and SmartSymbols. All of these tools are easy – to use and intuitive, helping users to quickly develop and deploy visualisation applications.

Powerful QuickScript Editor



With the QuickScript Editor, an InTouch application can be extended and customised to address specific system requirements, making InTouch software one of the most flexible HMI products on the market. Scripts can be configured to execute based on numerous parameters, such as specific process conditions, data changes, application events, window events, keyboard strokes, ActiveX events and more. The QuickScript environment also supports QuickFunctions, which allow users to develop a library of scripts that can be re-used, simplifying the application and resulting in decreased initial engineering and application maintenance time and simplified application deployment.

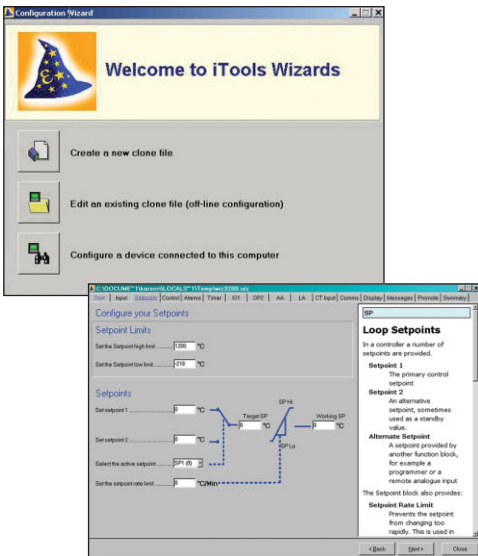
Standard Library Templates



SmartSymbols enable object-oriented graphics so that users can create standardised libraries of objects that contain all the graphics, scripts and tag controls that an application object needs to be useful. Any graphic in an InTouch window can be converted into a SmartSymbol by right-clicking on it. In addition, libraries of SmartSymbols can be exported to other applications and plants, enabling companies to standardise on graphics throughout the entire organisation.

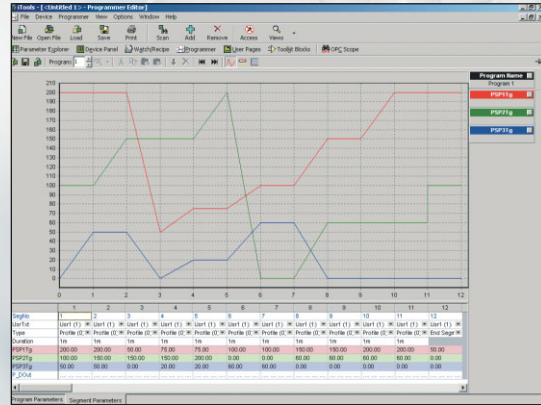
- Configuration with Wizards to help the user
- Graphical wiring editor
- Cloning
- Terminal wiring visualisation
- Data logging and trending
- Setpoint program editor
- Process monitoring
- OPC Server
- Remote connection

iTools is a versatile suite of software tools to allow configuration and monitoring of all Eurotherm 2000 and 3000 Series Controllers and the T630 Process Controller. It also provides runtime monitoring of the 5000 Series graphical recording and data management units. It is capable of editing, storing and 'cloning' complete controller configurations as well as setting up data logging, process monitoring and Ethernet and modem connections.



Setpoint Program Editor

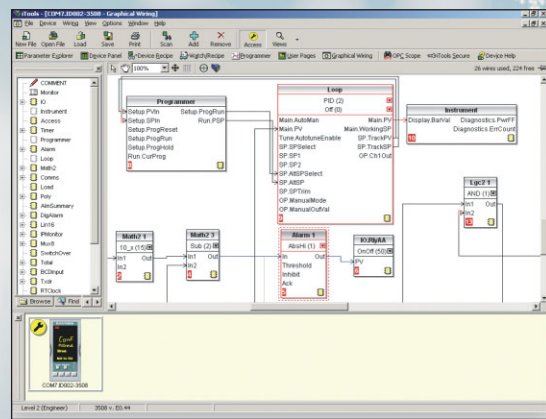
- Simple setup of setpoint profiles
- Store, retrieve and download program files
- Unlimited program storage
- Online and offline editing



The Setpoint Program Editor within iTools provides a simple method of configuring setpoint profiles and programmable event outputs. Programs can be edited live - online with the controller, or offline - for download after editing or storage of the profile. Storage of profiles is limited only by the amount of disk space available at the PC.

Graphical Wiring Editor

- Simple 'Drag & Drop' wiring
- Pre-configured function blocks
- Access to real time monitoring



Configuring Eurotherm controllers has never been easier with the Graphical Wiring Editor within iTools. This intuitive tool allows the user to configure the latest Eurotherm controller, the 3500, using a simple drag and drop graphical interface. iTools includes pre-configured function blocks combined with the Graphical Wiring Editor, the user can develop advanced control applications in minutes.

Eurotherm can now provide a low-cost HMI system that can display all of Eurotherm's products. We meet this requirement by linking Wonderware's world leading InTouch HMI with Eurotherm's iTools and EuroMBus technology to provide a solution that is very cost-effective

T555 Eurotherm Project Studio now includes the Eurotherm Process Viewer as a option. This package provides Wonderware inTouch as a true graphical front end to the Eurotherm iTools Modbus OPC Server providing standard and easy to configure displays for all Eurotherm products supporting Modbus communications.

Wonderware OPCLink



The Wonderware OPCLink is a Microsoft Windows application program that acts as a communications protocol converter. This allows other Windows application programs access to data from local or remote OPC servers. OPCLink detects automatically which OPC data access version is implemented in OPC servers (up to version 2.04) and uses the latest version available. OPCLink connects to OPC servers, converts client commands to OPC protocol and transfers data back to clients using DDE, FastDDE, or SuiteLink.

LINtools 2000



- Common tool set for the ALIN product range
- Powerful online commissioning features
- Automatic documentation
- Graphical configuration
- Extensive library of control modules

LIN tools are a comprehensive set of configuration, test, documentation and commissioning tools for the ALIN instruments. LINtools includes graphical configuration for continuous and sequencing control. The on-line monitoring facility allows users to observe databases and SFCs for commissioning and fault finding purposes.

OPC Servers



LINopc

Provides connectivity between an OPC client and the LIN Control networks. LINopc supports Ethernet, Arcnet and serial. Modbus RTU and TCP protocols are available. It has its own inbuilt security system based on the Operating System security. It can also run a simulation LIN database.

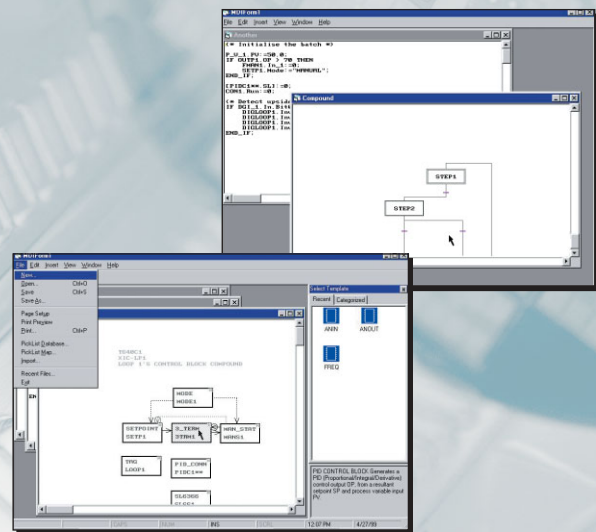
EuroMBus

Provides connectivity between an OPC client and the Modbus Control networks. EuroMBus supports Modbus TCP on Ethernet and Modbus RTU serial. It provides data connections to Eurotherm controller ActiveX faceplates.



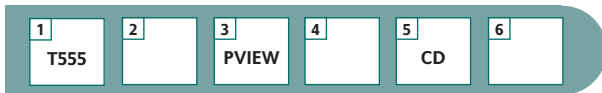
Continuous strategies are configured graphically using 'block structured' technologies provided by the Eurotherm ALIN Database Editor which supports a comprehensive library of function blocks.

Sequences are configured graphically using Sequential Function Charts (SFCs) following the IEC1131-3 standards. Steps initiate Actions which may be Structured Text statements (ST), or nested SFCs, transitions determine when control passes from one step to another.



The on-line monitor facility of LINtools enables users to view and interact with control and sequence strategies running in remote ALIN instruments. With the database monitor and the necessary security clearance, remote ALIN instrument databases can be accessed and blocks can be modified on screen. The database monitor allows a combination of blocks from multiple nodes to be observed simultaneously.

Order Code



- 1 Basic Product** EPS2000 **T555**
- 2 Type**
 - With ArcNet PCI card **PCI**
 - With ArcNet PCMCIA card **PCMCIA**
 - With ArcNet PCI-X card **PCIX**
 - No card supplied **-**
- 3 Process Viewer** **PVIEW**
- 4 System Size**
 - Entry level (20 LIN blocks/64 tags)
 - Runtime **RT-ENT**
 - Development **DS-ENT**
 - Base (20 LIN blocks/500 tags)
 - Runtime **RT-BAS**
 - Development **DS-BAS**

- Small (100 LIN blocks/1000 tags)
 - Runtime **RT-SML**
 - Runtime with I/O **RO-SML**
 - Development **DS-SML**
- Large (300 LIN blocks/3000 tags)
 - Runtime **RT-LRG**
 - Runtime with I/O **RO-LRG**
 - Development **DS-LRG**
- XLarge (600 LIN blocks/6000 tags)
 - Runtime **RT-XRG**
 - Runtime with I/O **RO-XRG**
 - Development **DS-XRG**
- 5 Media Type** CD Rom with online manuals **CD**
- 6 Version** InTouch ArchestrA enabled **V3**

Eurotherm: International sales and service

Understanding and providing local support is a key part of Eurotherm's business. Complementing worldwide Eurotherm offices are a whole range of partners and a comprehensive technical support team... a soothing melody to ensure you get a service you will want to go back to.

AUSTRALIA *Sydney*
Eurotherm Pty. Ltd.
Telephone (+61 2) 9838 0099
Fax (+61 2) 9838 9288

AUSTRIA *Vienna*
Eurotherm GmbH
Telephone (+43 1) 7987601
Fax (+43 1) 7987605

BELGIUM *Moha*
& LUXEMBURG *Huy*
Eurotherm S.A/B.V.
Telephone (+32) 85 274080
Fax (+32) 85 274081

BRAZIL *Campinas-SP*
Eurotherm Ltda.
Telephone (+5519) 3237 3413
Fax (+5519) 3234 7050

DENMARK *Copenhagen*
Eurotherm Danmark A/S
Telephone (+45 70) 234670
Fax (+45 70) 234660

FINLAND *Abo*
Eurotherm Finland
Telephone (+358) 22506030
Fax (+358) 22503201

FRANCE *Lyon*
Eurotherm Automation SA
Telephone (+33 478) 664500
Fax (+33 478) 352490

GERMANY *Limburg*
Eurotherm Deutschland GmbH
Telephone (+49 6431) 2980
Fax (+49 6431) 298119
Also Regional Offices

HONG KONG & CHINA
Eurotherm Limited *Aberdeen*
Telephone (+85 2) 28733826
Fax (+85 2) 28700148

Guangzhou Office
Telephone (+86 20) 8755 5936
Fax (+86 20) 8755 5831
Beijing Office
Telephone (+86 10) 6762 0936
Fax (+86 10) 6762 0931

Shanghai Office
Telephone (+86 21) 6352 6406
Fax (+86 21) 6352 7351

INDIA *Chennai*
Eurotherm India Limited
Telephone (+9144) 24961196
Fax (+9144) 2256682070

IRELAND *Dublin*
Eurotherm Ireland Limited
Telephone (+353 01) 4691800
Fax (+353 01) 4691300

ITALY *Como*
Eurotherm S.r.l.
Telephone (+39 31) 975111
Fax (+39 31) 977512
Telex 380893 EUROTH I

KOREA *Seoul*
Eurotherm Korea Limited
Telephone (+82 31) 2738507
Fax (+82 31) 2738508

NETHERLANDS *Alphen a/d Ryn*
Eurotherm B.V.
Telephone (+31 172) 411752
Fax (+31 172) 417260

NORWAY *Oslo*
Eurotherm A/S
Telephone Oslo (+47 67) 592170
Fax (+47 67) 118301

SPAIN *Madrid*
Eurotherm España SA
Telephone (+34 91) 6616001
Fax (+34 91) 6619093

SWEDEN *Malmo*
Eurotherm AB
Telephone (+46 40) 384500
Fax (+46 40) 384545

SWITZERLAND *Freienbach*
Eurotherm Produkte (Schweiz) AG
Telephone (+41 55) 4154400
Fax (+41 55) 41544151

UNITED KINGDOM *Worthing*
Eurotherm Limited
Telephone (+44 1903) 268500
Fax (+44 1903) 265982
Web www.eurotherm.co.uk

U.S.A *Leesburg VA*
Eurotherm Inc.
Telephone (+1 703) 443 0000
Fax (+1 703) 669 1300
Web www.eurotherm.com

Represented by: